

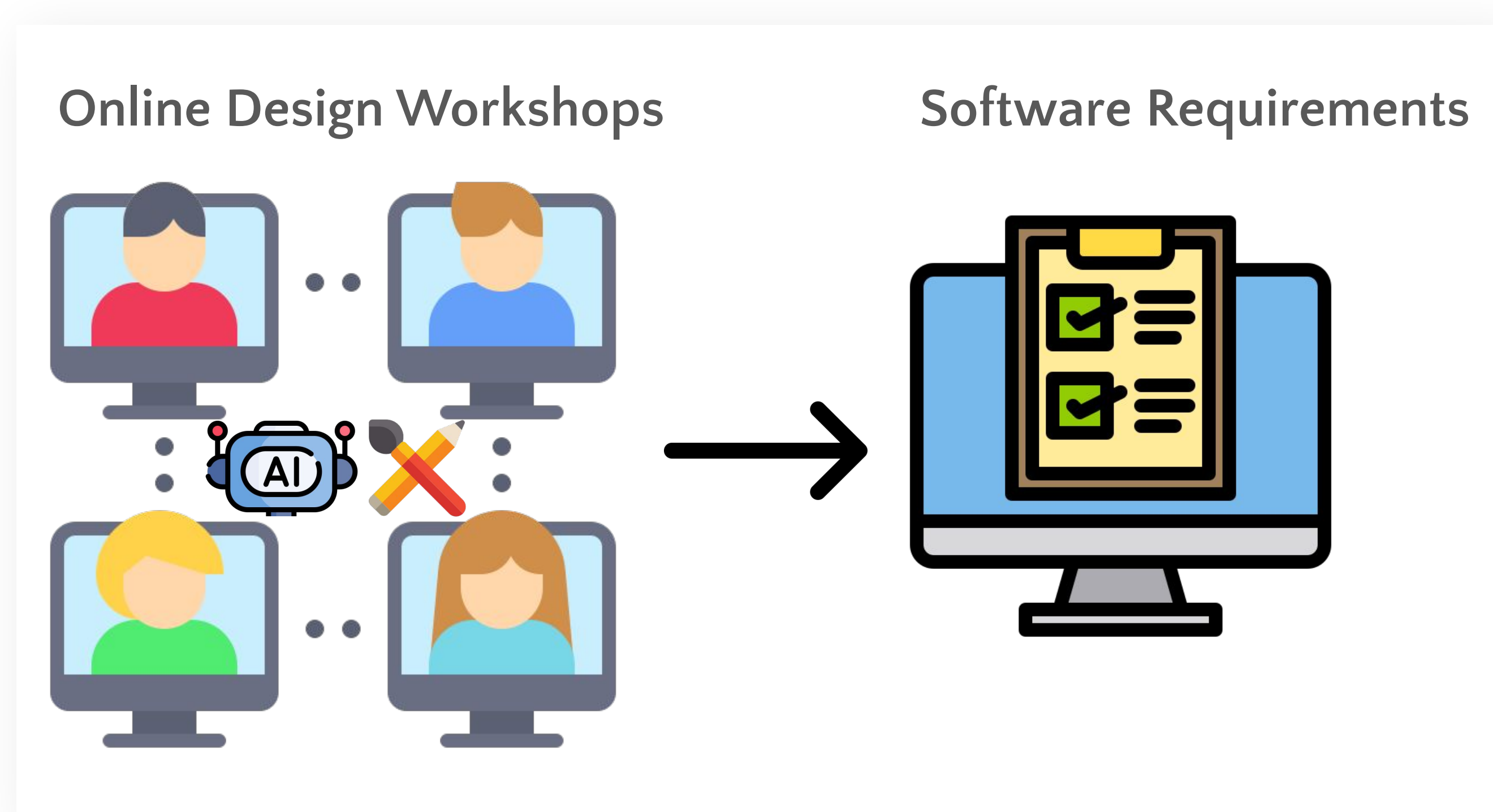
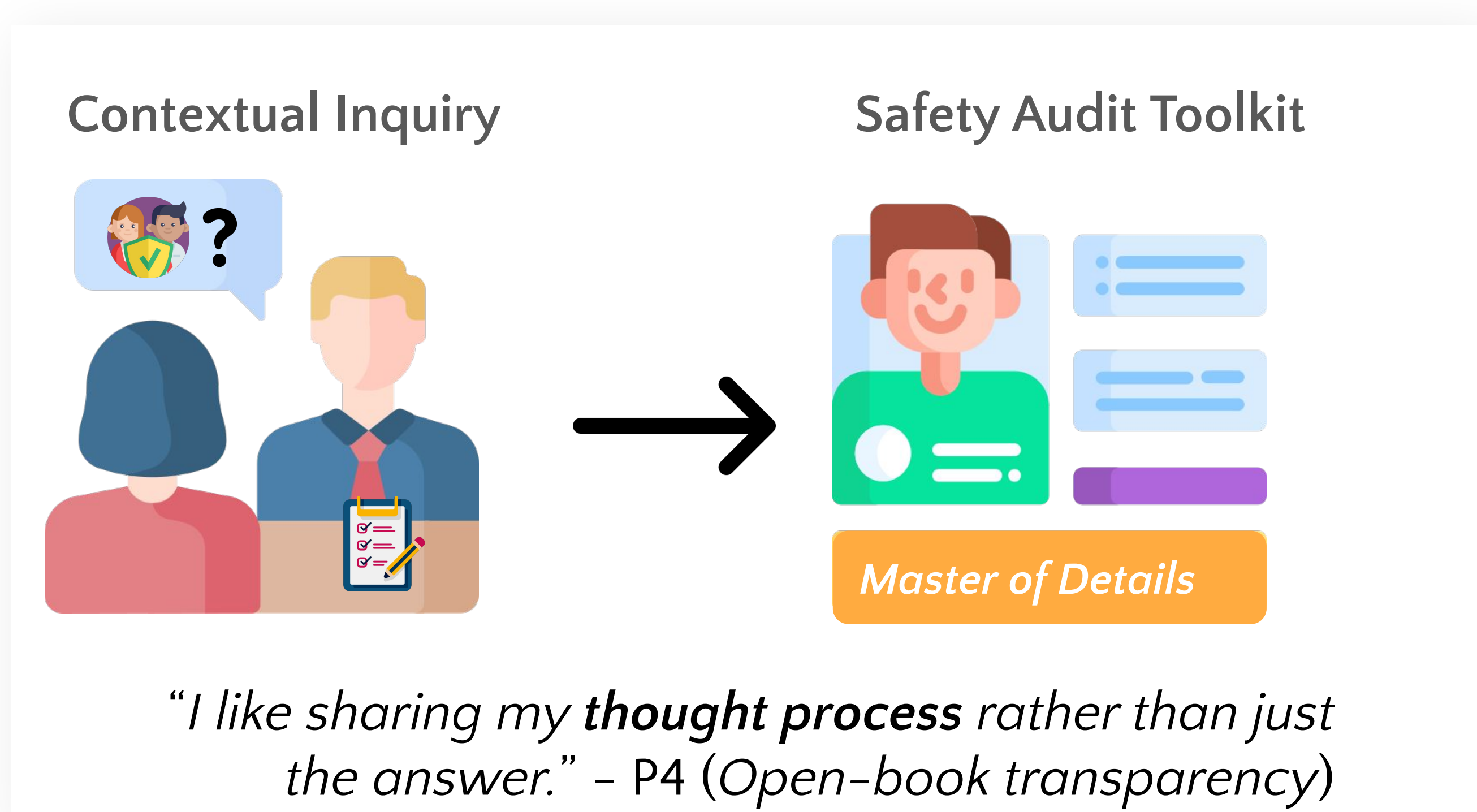
SAFER-AI is building supports for engineers to speak up and be heard.

Building SAFER-AI: Safety and Accessibility in Fundamental Engineering for Responsible AI

Background: Software engineering with AI requires engineers to negotiate bias, fairness, and risk. **Without psychological safety** – the belief that critique is welcomed – some voices stay silent, critique becomes shallow, learning narrows, and **software quality suffers**.

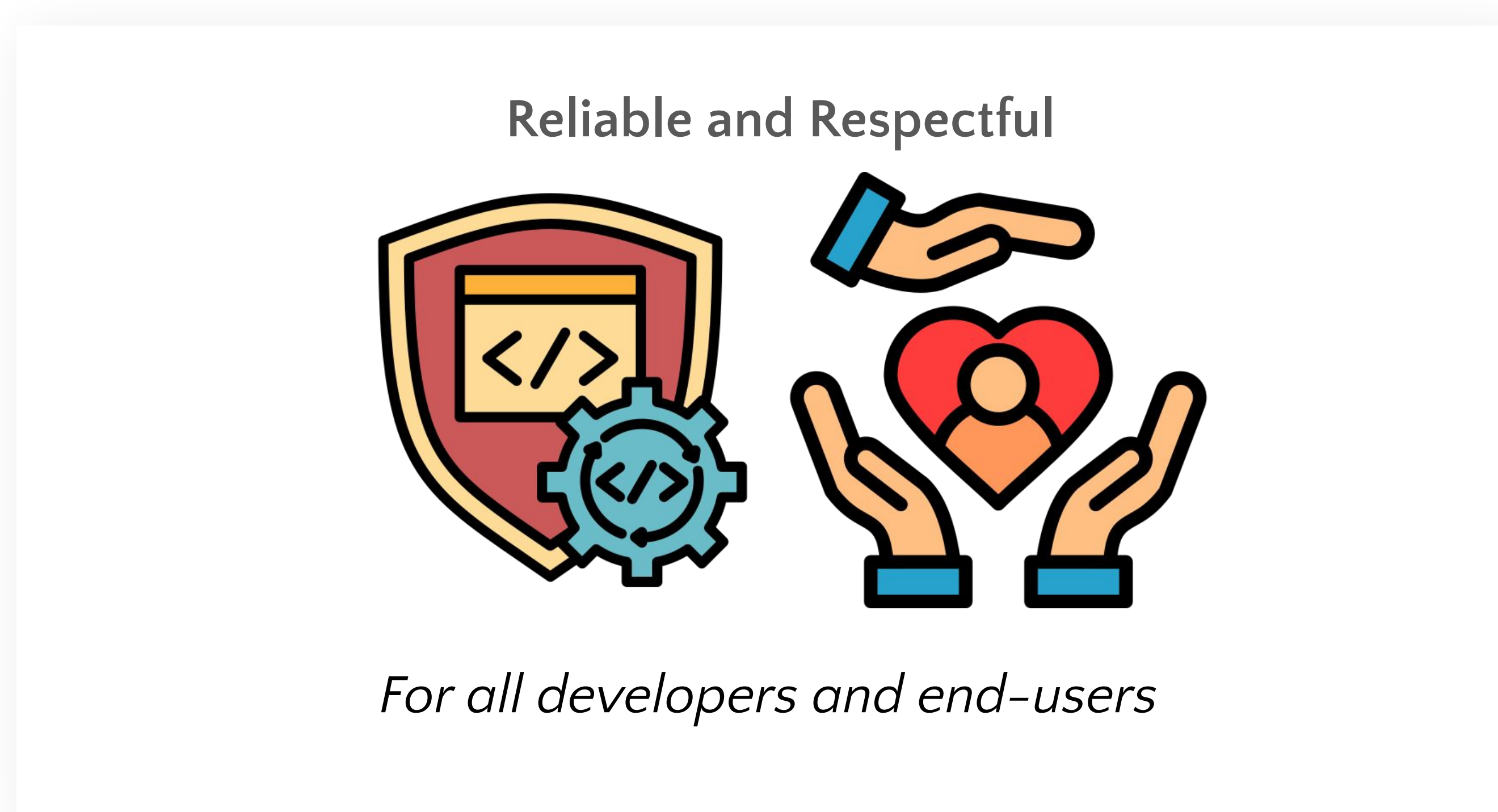
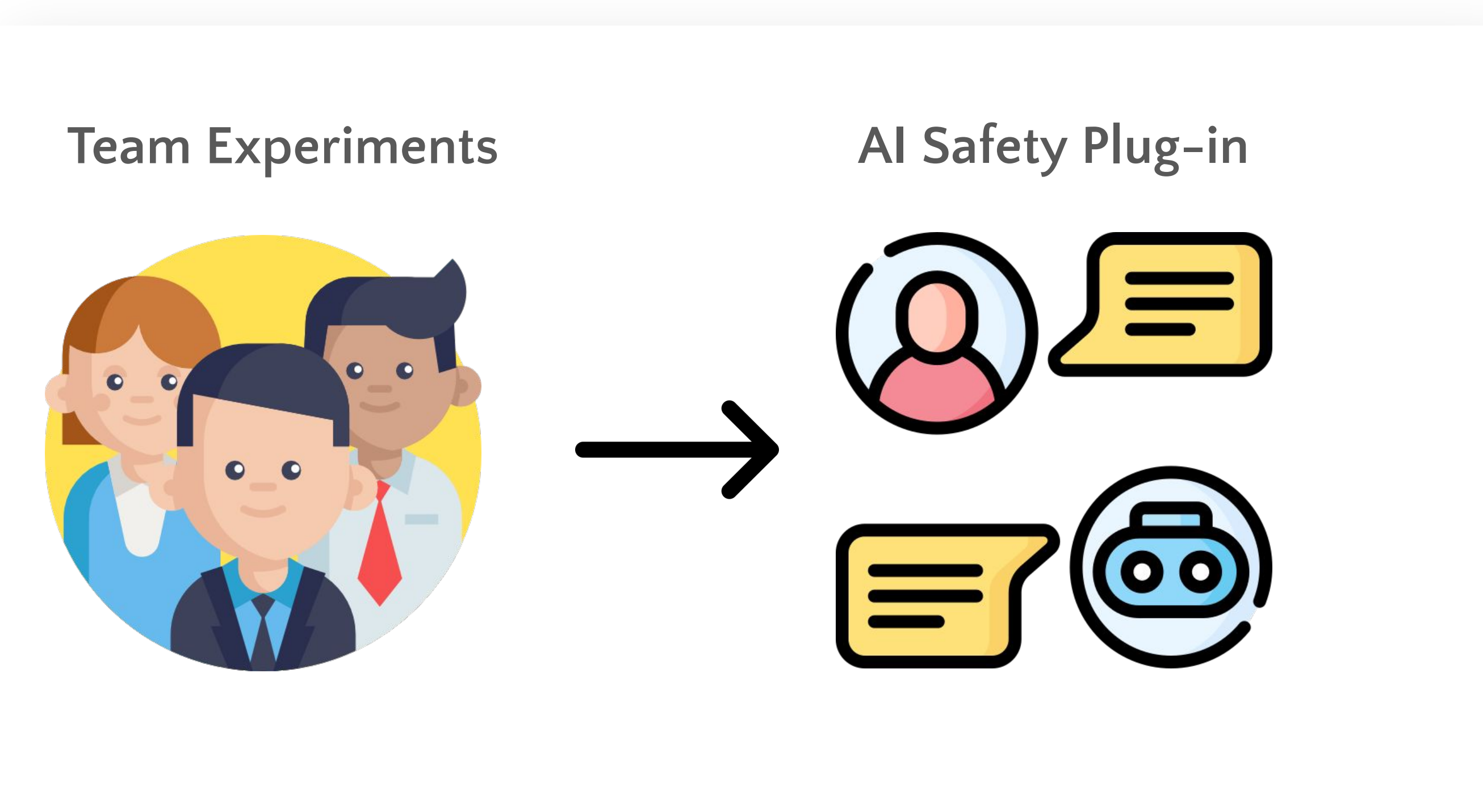
RQ1. Explore Lived Experience. How do engineers experience psychological safety in team comms?

RQ2. Co-design AI Interactions. How do engineers envision AI for team psychological safety?



RQ3. Evaluate Interactions. How do different styles of conversational AI impact team psychological safety?

Impact – Safer Software ✓



HIRE ME

I turn messy meetings into measurable learning and better software.

- ✓ Contextual inquiry & co-design for Responsible AI
- ✓ Experiments that deliver **reusable tools + evidence**

👉 Scan for papers, code, and contact.



darrendbutler.github.io



Darren “Ren” Butler, Andrew Begel